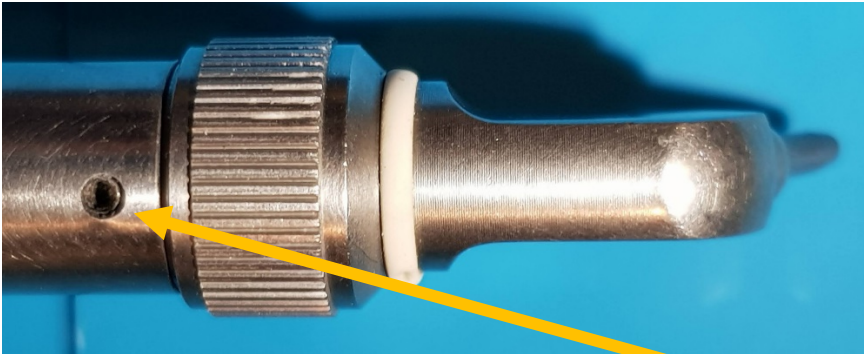
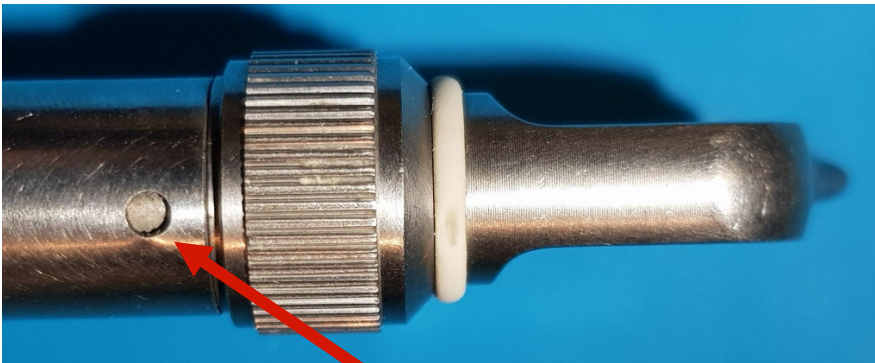


Evident Danville Microetcher anti-rotation grub screw

To ensure that powder flows through the nozzle ensure that all washers are correctly in place and nozzle is tightened fully.



Ensure that the internal part has not rotated. It is held in place with a grub screw that is visible in the small hole next to the nozzle.



If it has rotated the grub screw is no longer visible and the internal tubing can become twisted and prevent proper function. The grub screw will still be present but not visible.